

# Haier Biomedical Blood Banking Centrifuge

## LX-75L2400R



**Qingdao Haier Biomedical Technology Co., Ltd.**

No.280 Feng Yuan Road, High-tech Zone,  
Qingdao, 266111, P.R. China  
E-mail: [inquiry@haierbiomedical.com](mailto:inquiry@haierbiomedical.com)  
Website: [www.haiermedical.com](http://www.haiermedical.com)



Haier Biomedical  
International



Haier Biomedical  
International



@haiermedicalint



Haier Biomedical  
International



Haier Biomedical  
International

## Advanced Centrifugation Solutions for Modern Blood Banking



Step into a realm of unmatched convenience with the Haier Biomedical LX-75L2400R Blood Banking Centrifuge, tailored to exceed the demanding needs of blood bank centrifugation. Redefine efficiency as the LX-75L2400R effortlessly accommodates up to 16 x 500 ml blood bags or 6 x 2400 ml centrifuge bottles, delivering optimal sedimentation results with each run.

Elevate your laboratory's capabilities with the LX-75L2400R's extensive rotor options, its formidable motor, and user-friendly control panel, all complemented by a robust refrigeration system and an array of versatile accessories.

Crafted for excellence, the LX-75L2400R is the centrifuge of choice for blood banks and transfusion centers. Its superior design also finds extensive application in the forefront of biopharmaceuticals, cell therapy, biological culture, vaccine production, and academic research, making it a pivotal tool in diverse scientific fields.

## Excellent Performance



Unlock the full potential of your blood processing center with the LX-75L2400R's expansive capacity and cutting-edge selection of rotors, carriers, and adapters, masterfully designed to handle a diverse array of high-capacity applications. This powerhouse is the epitome of versatility, perfect for sophisticated bioprocessing, clinical diagnostics, and comprehensive blood sample preparation.

Quiet yet powerful, the LX-75L2400R redefines operational convenience, setting a new standard in the industry. At its heart lies a microprocessor-controlled frequency motor, delivering robust torque and rapid acceleration, all while ensuring an extended motor lifespan. Achieve peak performance with speeds soaring up to 7,500 rpm and forces reaching 13,376 x g, propelling your research to new heights with unmatched precision and reliability.



### Expansive Memory

Maximize efficiency with over 1000 program memories, ready to streamline your workflow.



### Precise Control

Tailor your operations with 15 acceleration and 16 deceleration stages for unparalleled precision.



### Rapid Cooling

Achieve 4°C in just 15 minutes from room temperature, speeding up your readiness.



### Maintenance-Free Motor

Enjoy seamless operation with our brushless induction motor that requires no maintenance and ensures a clean lab environment.



### Quiet Operation

Work in peace with a sound design that keeps noise levels below 60 dB, even at maximum speed.



### Stability

Trust in the stability of our low-center-of-gravity design for consistent performance and optimal centrifugal results.

## Ergonomic Design



Open the door

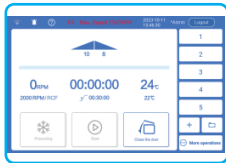
### One-Touch Automation

Experience unparalleled convenience with our one-button automatic door mechanism that seamlessly opens and closes from front to back, ensuring quick and easy access while maintaining sterility standards.



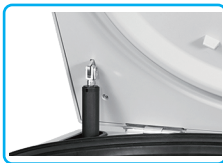
### Automated Rotor Lid Management

With our centrifuge, the rotor lid opens and closes automatically, complete with lid storage, reducing manual effort and enhancing workflow efficiency.



### Intuitive 10-Inch Touch Screen

The expansive 10-inch touch screen interface provides operators with user-friendly navigation through settings and features, making operation straightforward and minimizing training time.



### Motorized Gas Springs

Engineered for safety, the motorized gas springs offer smooth and controlled opening and closing of the centrifuge chamber, providing an extra layer of protection to users.



### 316 Stainless Steel Chamber

The premium 316 stainless steel construction of the centrifuge chamber ensures a rust-free and contaminant-resistant environment that is exceptionally easy to clean and maintain.



### Versatile Rotor Capacity

Our centrifuge accommodates a variety of research needs with three rotors designed for 250ml, 500ml, 1000ml, 2000ml, and 2400ml centrifuge bottles, as well as 500ml blood bags, maximizing your laboratory's throughput capabilities.



### Emergency Lid Release

The lid can be opened by utilizing the reset hole on the side plate. Rotate a 5mm hex key clockwise several times to open the lid.

## Interactive 10-inch LCD Touchscreen



### Glove-Friendly and Ergonomic

The 45° angled, glove-friendly touchscreen offers a wide viewing angle, making it comfortable and practical for users of all heights.



### Enhanced Access Controls

Equipped with user login and password protection, ensuring individualized program data management for each user.



### Visibility and Monitoring

Enlarged track bar display of set and actual run conditions during centrifugation, ensuring clear visibility from a distance.



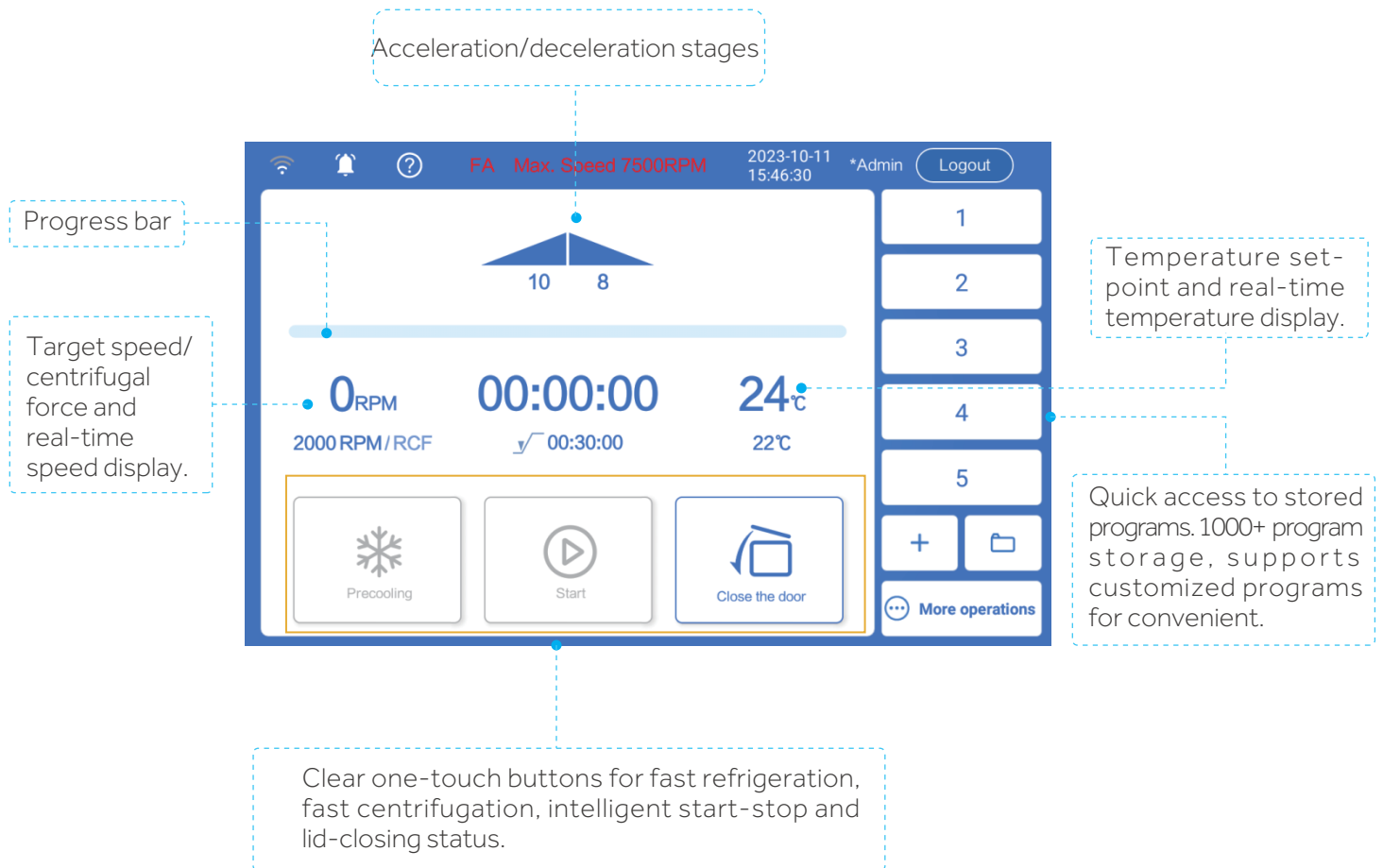
### Program Recall and Efficiency

Quick recall feature for over 1000+ programs with alpha-numeric naming, minimizing time between runs and facilitating quick starts for routine users.



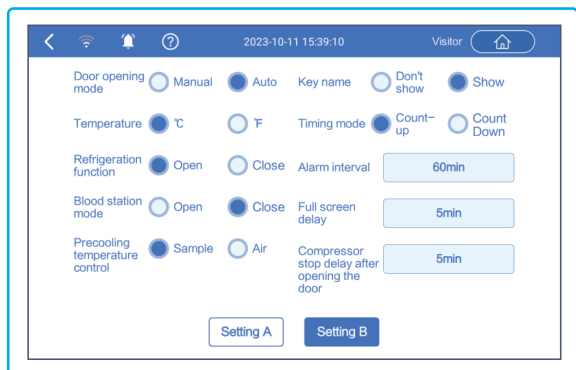
### Adjustable On-the-Fly

Users can alter speed, centrifugal force, time, and temperature during the centrifugation process for precise control.





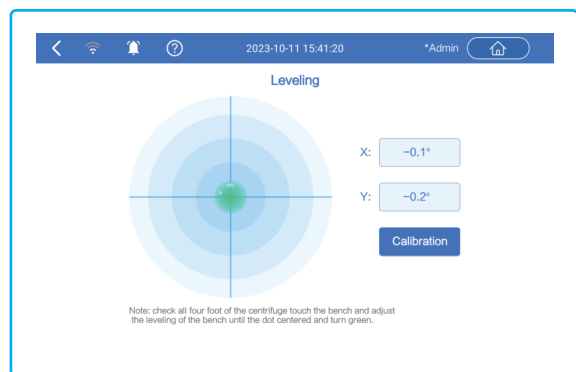
Multiple operation setting modes, including unique blood bank mode function, convenient for blood bank users to use.



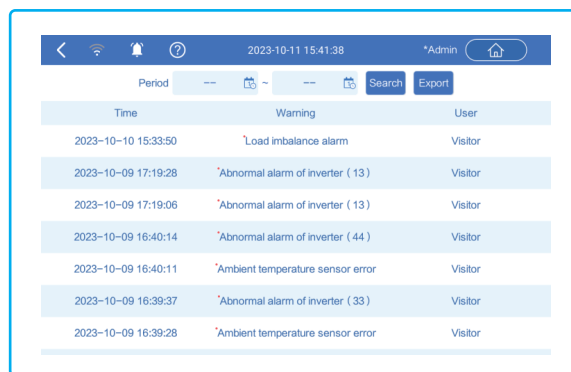
Multi-echelon program running mode, achieving continuous operation of multiple speed steps for special users



Electronic level assists in installation and leveling, making installation easier and simpler



The operation record including speed, time and temperature, operation curve with alarm messages etc. can be tracked on the screen and exported by USB port



## Enhanced Safety



### Immediate Imbalance Detection & Shutdown

Offers real-time loading imbalance detection with instant shutdown to protect against imbalances.



### Stable Installation

Φ 120mm adjustable feet ensure the centrifuge is securely and stably installed in any setting.



### Comprehensive Alarm System

Features a multi-faceted alarm system for abnormal voltage, high temperature, overspeed, load imbalance, rotor absence, brake anomalies, and rotor life.



### Anti-Vibration Lid Lock

Prevents accidental opening during operation, ensuring sample integrity and operator safety.



### Robust Construction

Fully covered steel plate protective sleeve and a 12mm steel shell provide enhanced durability and user safety.



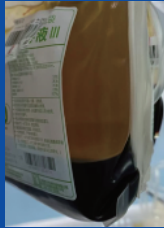
### High-Quality Connectivity

Equipped with an imported 5-core aviation plug for easy, fast, and safe usage.

**Real - World Efficacy**



**Blood Station User: Blood centrifugal test**



**Haier Biomedical**

**VS**

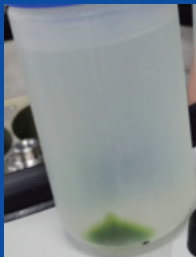


**Other Brand**

**Precision Layering**

Clear Separation with Distinct Leukocyte Layer, Eliminating the Need for Re-Separation

**Scientific Research User: Seaweed centrifugal test**



**Haier Biomedical**

**VS**



**Other Brand**

**Optimal Centrifugation**

Clear Layering, High Yield, and Zero Wall Adhesion

## Technical Data

Model	LX-75L2400R
Maximum Capacity	8*2000ml* or 16*500ml blood bags
Max Speed (rpm)	7,500
Max RCF(xg)	13,376
Speed Accuracy (rpm)	±5
Time Setting Range	1min~99h59m59s (1-second increment)
Precooling Function	Yes
Temperature Setting Range	-20°C~40°C, adjustment increment: 1°C
Display	10 inch touch screen
Noise (dB(A))	≤60
Power Supply (V/Hz)	3~400/50/60
Power (W)	6400
Exterior Dimensions (W*D*H)(mm)	900*1050*1020
Lid Opening Height (mm)	1780
Net Weight (kg)	620
Packing Dimensions (W*D*H)(mm)	1092*1279*1720
Gross Weight (kg)	750
Other Functions	Rotation speed/RCF switchover, inching operation, running process indicator, sound alert, adjustable acceleration/deceleration, user logging, user lock-out, automatic door opening, on-screen display for imbalance, over temperature, stainless steel chamber
Certification	CE

\*Buckets for 2000ml centrifuge bottles can be customized depending on requirements.



BE No.	BE12DC000	BE12JP002	BE12JQ002	BE12K1000
Type	Fixed-angle rotor (Sealed)	Adapter (Sets of 6) for BE12DC000	Adapter (Sets of 6) for BE12DC000	Centrifuge Bottle(Sets of 6) for BE12DC000
Max Capacity	6*1000ml	500ml	250ml	1000ml
Max RCF (xg)	13,376	-	-	-
Max Speed (rpm)	7,500	-	-	-
Max Bottle Capacity (ml)	1000	500	250	-
Bottles Per Rotor	6	6	6	-
Bottle Type	Flat bottom	Flat bottom	Flat bottom	-

## Swing-Out Rotor



Swing-Out Rotor  
12 Blood Bags

Swing-Out  
Rotor Block



BE No. BE12F5001

Max. RCF (xg) 5,331

Max. speed (rpm) 4,000



Bucket  
(Sets of 6)



BE No. BE12H4000

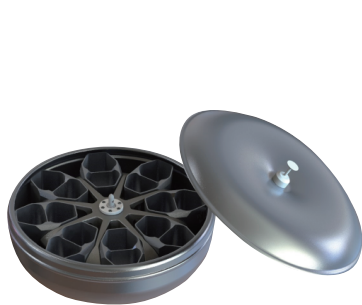
Max Capacity (ml) 2400

Bucket Type Flat bottom

Adapter/Bottle(Sets of 6) for BE12H4000



BE No.	BE12JT001	BE12K0000
Type	Double blood bag adapter	Centrifuge bottle
Max Capacity	2*500ml	2400ml
Blood bags/Bottles per rotor	12 blood bags	6 bottles



Swing-Out Rotor  
16 Blood Bags

Swing-Out  
Rotor Block



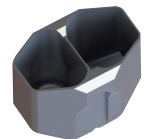
BE No. BE12FP001

Max. RCF (xg) 5,706

Max. speed (rpm) 4,000



Double Blood Bag  
Bucket (Sets of 8)



BE No. BE12H9000

Max Capacity 2\*500ml

Bucket Type Flat bottom

Adapter(Sets of 8) for BE12H9000

BE No.	BE12JF002
Type	Double blood bag adapter
Max Capacity	2*500ml
Blood bags per rotor	16

