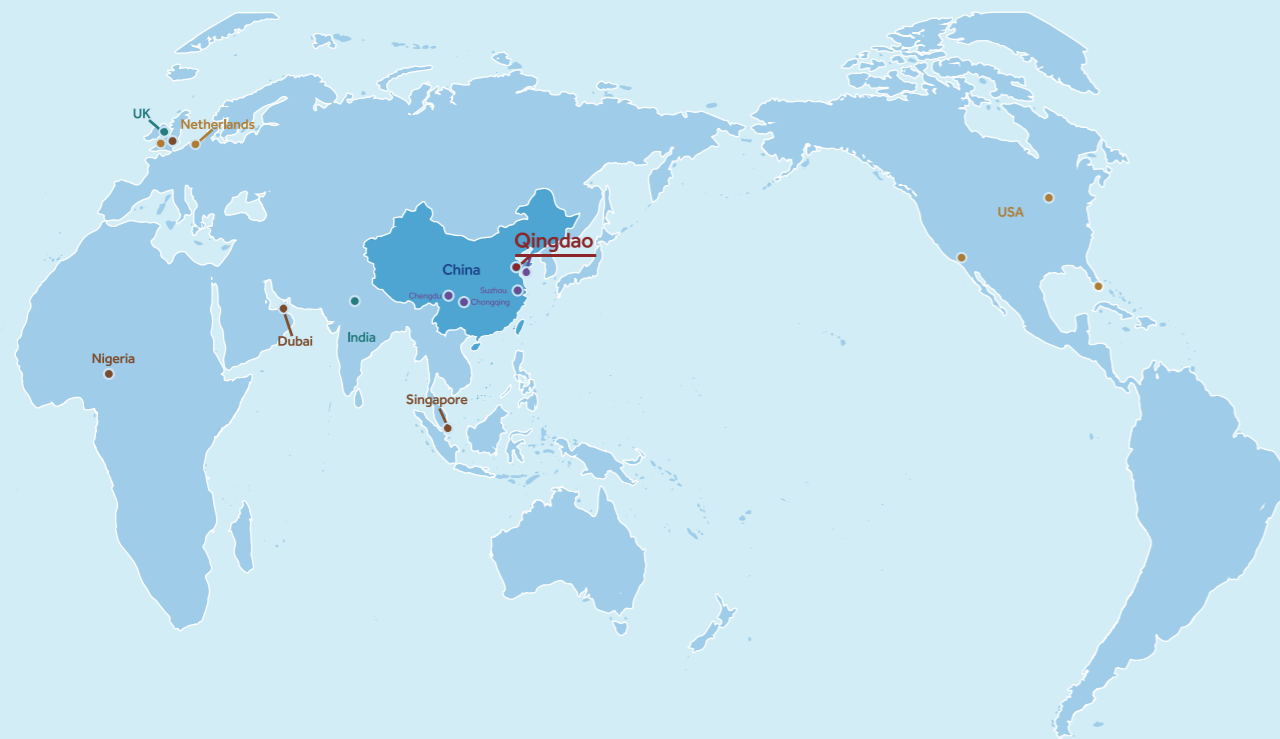


# Pharmacy Refrigerator Solutions



● Headquarter ● Global warehouse ● Training center ● Global subsidiary ● Manufacturing base

**Qingdao Haier Biomedical Co.,Ltd.**

No.280 Feng Yuan Road, High-tech Zone,  
Qingdao, 266109, P.R. China  
Tel: +86-0532-88935593  
Website: www.haiermedical.com



Haier Biomedical International



Haier Biomedical International



@haiermedicalint



Haier Biomedical International



Haier Biomedical International

Note: If a slight difference occurs between pictures and actual products, please refer to actual products. Our company reserves the right of final interpretation of this brochure, please contact us for any further information if required.





# CONTENT









New Generation Pharmacy Refrigerator .....	03
RFID Refrigerator .....	09
Advanced Pharmacy Refrigerator with Touchscreen .....	11
Advanced Pharmacy Refrigerator with LED Display .....	12
Standard Pharmacy Refrigerator .....	15
Under-Counter Pharmacy Refrigerator .....	25
Combined Refrigerator and Freezer .....	31






Used for storage of medicines, vaccines, reagents, biological products and other items that require a temperature between 2-8°C in hospitals, pharmacies, pharmaceutical factories, clinics and laboratories etc.

## Product Advantages

-  Low energy consumption: 2.5 kWh/day<sup>①</sup>
-  Excellent performance: temperature uniformity  $\leq \pm 1^\circ\text{C}$ <sup>②</sup>
-  Quiet operation: 39dB (A)
-  Intelligent anti-condensation: triple-paned tempered glass door with door frame heater, effectively reduces condensation even at 32°C, 80% RH ambient temperature
-  Optional USB, RS485 and printer, easy to export temperature data; all events and alarms will be recorded by the USB module
-  Eco-friendly hydrocarbon refrigerant (R290) and CFC-free polyurethane insulation for reduced global warming
-  Hermetically sealed compressor, forced-air circulation and automatic defrost to ensure high cooling performance
-  Microprocessor controller, display with resolution of 0.1°C



 Self-closing door with magnetic gasket for positive seal

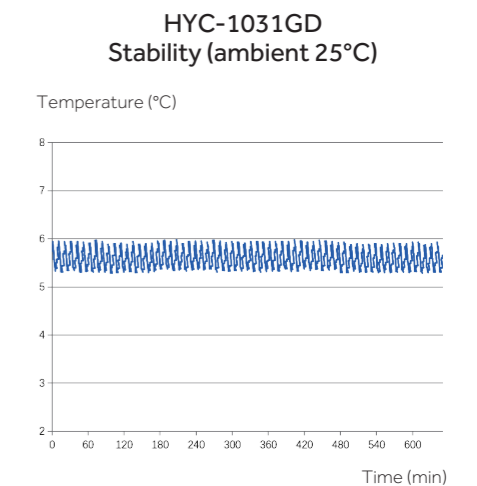
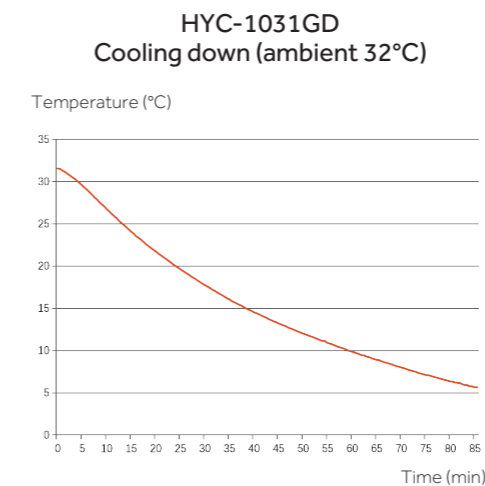
 Multiple alarm functions for safer monitoring

\* ①&②: Tested by TUV according to DIN13277

# New Generation Pharmacy Refrigerator



## Cabinet Temperature



## Specifications









Model		HYC-1031GD	
Technical Data	Cabinet Type	Upright	
	Climate Class	N, 16-32°C	
	Cooling Type	Forced Air Circulation	
	Defrost Mode	Auto Defrost	
	Refrigerant	R290, 80g	
	Sound Level (dB(A))	39	
Performance	Temperature Range (°C)	2-8	
Control	Controller	Microprocessor	
	Display	LED	
Electrical Data	Power Supply (V/Hz)	220-240; 50/60	
	Electrical Current (A)	2.2	
Dimensions	Capacity (L/Cu.Ft)	1031	
	Net/Gross Weight (approx)	kg	255/265
		lbs	/
	Interior Dimensions (W*D*H)	mm	1115*590*1670
		in	/
	Exterior Dimensions (W*D*H)	mm	1205*730*1990
		in	/
	PackingDimensions (W*D*H)	mm	1260*905*2110
in		/	
Container Load (20'/40'/40'H)	10/22/22		
Alarms	High/Low Temperature	Y	
	Remote Alarm	Y	
	Power Failure	Y	
	Sensor Error	Y	
	Low Battery	Y	
	Door Ajar	Y	
Accessories	Caster	4	
	Foot	2	
	Porthole	2	
	Shelves/Drawers	12/-	
	USB Interface	Optional	
	Printer	Optional	
	Temperature Recorder	/	
Others	Certification	CE, DIN13277 (Optional)	

\*Haier Biomedical reserves the right to change products and specifications without prior notice.

## New Generation Pharmacy Refrigerator



Used for storage of medicines, vaccines, reagents, biological products and other items that require a temperature between 2-8°C in hospitals, pharmacies, pharmaceutical factories, clinics and laboratories etc.

## Product Advantages

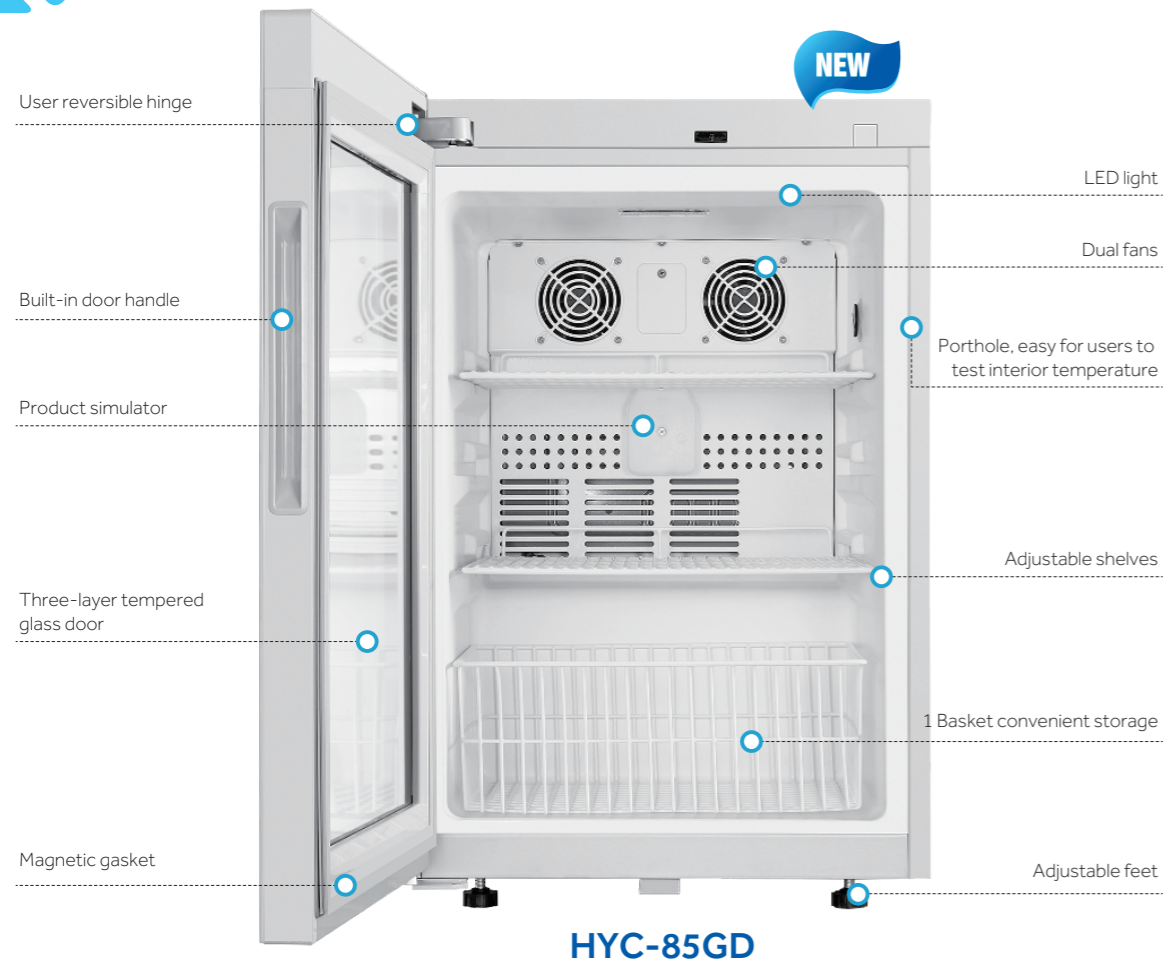
-  User reversible door hinge
-  Excellent performance: temperature uniformity  $\leq \pm 1^\circ\text{C}$  ①
-  Quiet operation: 35dB (A)
-  Intelligent anti-condensation: triple-paned tempered glass door with door frame heater, effectively reduces condensation even at 32°C, 80% RH ambient temperature
-  Optional USB and RS485, easy to export temperature data
-  Eco-friendly hydrocarbon refrigerant (R600a) and CFC-free polyurethane insulation for reduced global warming
-  Hermetically sealed compressor, forced-air circulation and automatic defrost to ensure high cooling performance
-  Microprocessor controller, display with resolution of 0.1°C

\* ① Tested by TUV according to DIN13277



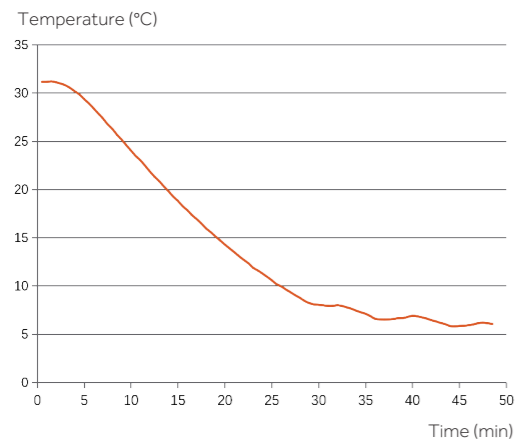
-  Magnetic gasket for positive seal
-  Multiple alarms for safer monitoring



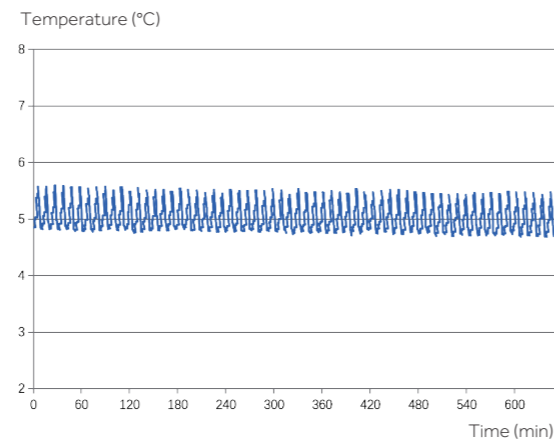


## Cabinet Temperature

**HYC-85GD**  
Cooling down (ambient 32°C)



**HYC-85GD**  
Stability (ambient 25°C)



# New Generation Pharmacy Refrigerator

## Specifications

Model		HYC-85GD	
Technical Data	Cabinet Type	Table-top/Under-counter	
	Climate Class	N, 16-32°C	
	Cooling Type	Forced Air Circulation	
	Defrost Mode	Auto Defrost	
	Refrigerant	R600a	
Performance	Sound Level (dB(A))	35	
	Temperature Range (°C)	2-8	
Control	Controller	Microprocessor	
	Display	Digital	
Electrical Data	Power Supply (V/Hz)	220-240/50	
	Electrical Current (A)	0.98	
Dimensions	Capacity (L/Cu.Ft)	85	
	Net/Gross Weight (approx)	kg	36/41
		lbs	/
	Interior Dimensions (W*D*H)	mm	405*405*555
		in	/
	Exterior Dimensions (W*D*H)	mm	495*550*740
		in	/
	Packing Dimensions (W*D*H)	mm	570*630*810
in		/	
Container Load (20/40/40H)	74/152/228		
Alarms	High/Low Temperature	Y	
	Remote Alarm	Y	
	Power Failure	Y	
	Sensor Error	Y	
	Low Battery	Y	
	Door Ajar	Y	
	Accessories	Caster	/
Foot		2	
Porthole		1	
Shelves/Drawers		2/1	
USB Interface		Optional	
Others	Printer	N/A	
	Temperature Recorder	/	
Certification	CE, DIN13277 (Optional)		

\*Haier Biomedical reserves the right to change products and specifications without prior notice.



## Smart Management of Medicine and Reagents Starts with IoT Technology

Perform statistical analysis of market data and medicine or reagents usage to report on market trends providing highly useful feedback to production and sales.



HYC-509R



### Smart IoT System Makes Storage Management Simple, Precise and Effective

RFID based smart IoT management system permits automatic management of stored products are automatically



Smart RFID label

Smart RFID shelf



Industrial-grade IoT Network Module Group

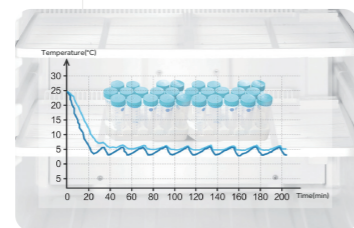


### Authorized Management for Material Flow at Controllable Risk

NFC authorized management system is traceable.



### Statistical Analysis of Test Data, Precise Verification and Scientific Instruction



### Precise Temperature Control Ultimate Safety of Test Reagents

2°C - 8°C storage temperature, real-time monitoring of cabinet temperature



### Intelligent Accurate Recording

Intelligent touch screen for quick check of warehouse in-and-out records



### Manage Market Data to Support Scientific Production Scheduling

Perform statistical analysis of market data and medicine or reagents usage to report on market trends providing highly useful feedback to production and sales.



### Effective Management of Sales Channels

Sales channels can provide timely feedback information to improve shipping, refilling, dispatching and inventory control, to provide continuity on supply and to optimize inventory level.



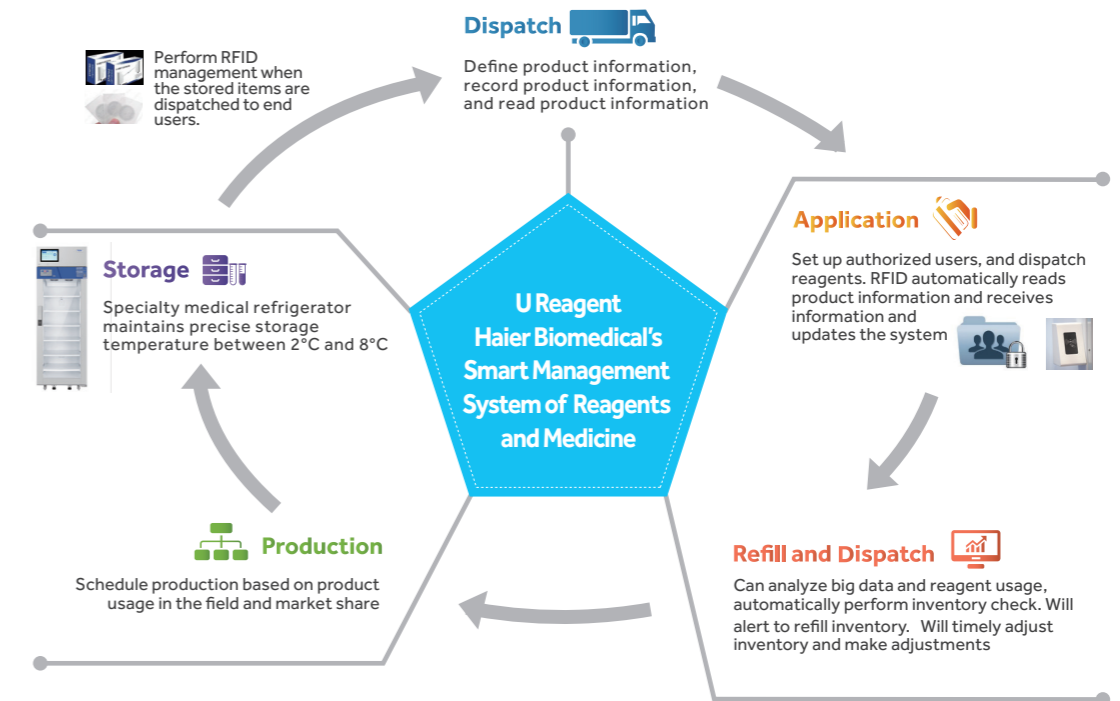
### Reagent Handling Process is Traceable and Controllable

Shipping and receiving processes of reagents are automatically monitored and controlled for authorized users. Every box of reagents is traceable.

# RFID Refrigerator

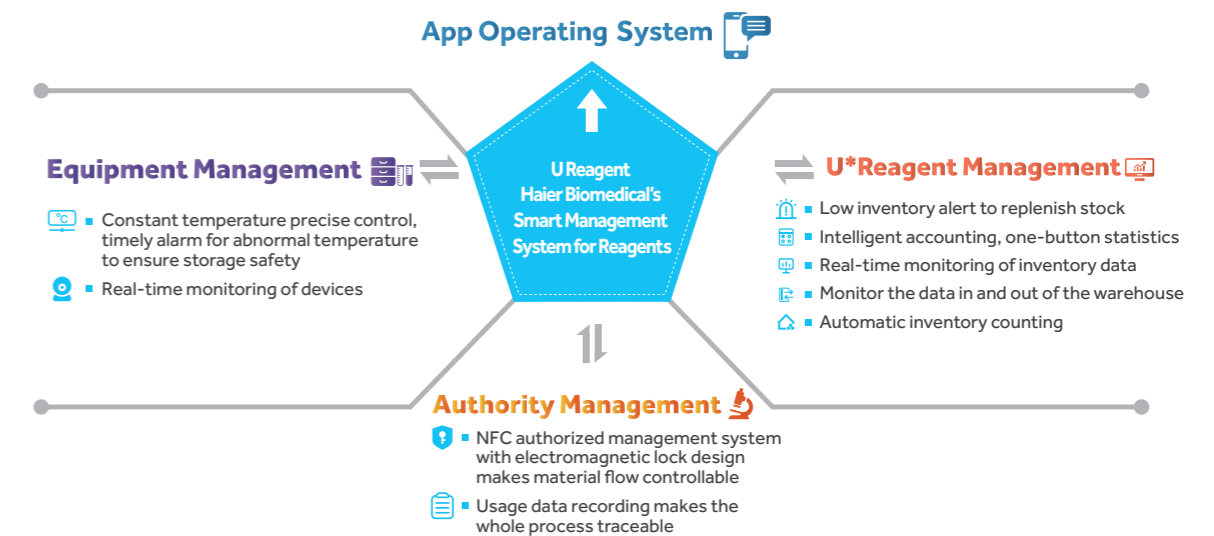
## Smart Management of Products

(It is suitable for manufacturing industry)



## From storage to use, the entire process is automatically and smartly controlled

(It is suitable for pharmaceutical factories, laboratories and hospitals)



## Product Specification

Model	Voltage (V/Hz)	Power (W)	External Dimensions (W*D*H) (mm)	Internal Dimensions (W*D*H) (mm)	Effective Volume (L)	Net Weight / Gross Weight (Kg)	Shelf	Touch Screen
HYC-509R	220-240/50/60	470	693*813*1981	593*585*1500	509	180/215	6	Yes










HYC-1099TF

HYC-509T

HYC-1099T

HYC-509TF

## Product Advantages

-  Microprocessor controller, 7-inch touch screen, easy to check the cabinet temperature graph, alarm & event records and other information; authority management is standard to avoid unauthorized access or incorrect settings
-  Excellent cooling performance, temperature uniformity  $\leq \pm 2^\circ\text{C}$ ; anti-freezing thermostat is equipped as standard, DIN13277 compliance
-  Double-paned tempered glass door with electronic heater to reduce condensation even at  $32^\circ\text{C}$ , 80% RH ambient; self-closing door hinge with  $90^\circ$  stop; magnetic gaskets to ensure a positive seal (Solid door type is also available upon request)
-  Electromagnetic lock is standard to avoid unauthorized access
-  Energy efficient interior LED lighting
-  Standard USB module to conveniently record and export cabinet temperature and alarm data; standard RS485 port and remote alarm contact for efficient external connection; optional printer to export cabinet temperature data
-  Eco-friendly hydrocarbon refrigerant (R600a) and CFC-free polyurethane insulation for reduced global warming
-  Hermetically sealed compressor, forced-air circulation with auto defrost to ensure high cooling performance
-  Multiple alarm functions for safer monitoring, audible/visual alert with mute function; remote alarm contact is equipped as standard
-  Adjustable plastic-coated wire shelves for improved circulation and flexible storage; fully extendable ABS drawer with divider is optional
-  25mm probe access port on side wall to accept user-provided monitoring equipment
-  4 universal casters with 2 leveling feet















HYC-1099F

HYC-509

HYC-1099

HYC-509F

## Product Advantages

-  Double-paned tempered glass door with electronic heater to reduce condensation even at  $32^\circ\text{C}$ , 80% RH ambient; self-closing door hinge with  $90^\circ$  stop; magnetic gaskets to ensure a positive seal
-  Microprocessor controller, digital display with  $0.1^\circ\text{C}$  resolution; easy to check the min/max temperature in the past 24 hours
-  Adjustable plastic-coated wire shelves for improved circulation and flexible storage; fully extendable ABS drawer with divider is optional
-  Convenient security with a top-mounted unique-key lock; electromagnetic lock is optional to avoid unauthorized access
-  Eco-friendly hydrocarbon refrigerant (R600a) and CFC-free polyurethane insulation for reduced global warming
-  Energy efficient interior LED lighting
-  Standard USB module to conveniently record and export cabinet temperature and alarm data; Standard RS485 port and remote alarm contact for efficient external connection; optional printer to export cabinet temperature data
-  Multiple alarm functions for safer monitoring, audible/visual alert with mute function; remote alarm contact is equipped as standard
-  Excellent cooling performance, temperature uniformity  $\leq \pm 2^\circ\text{C}$ ; anti-freezing thermostat is equipped as standard, DIN13277 compliance
-  Hermetically sealed compressor, forced-air circulation with auto defrost to ensure high cooling performance
-  25mm probe access port on side wall to accept user-provided monitoring equipment
-  4 universal casters with 2 leveling feet



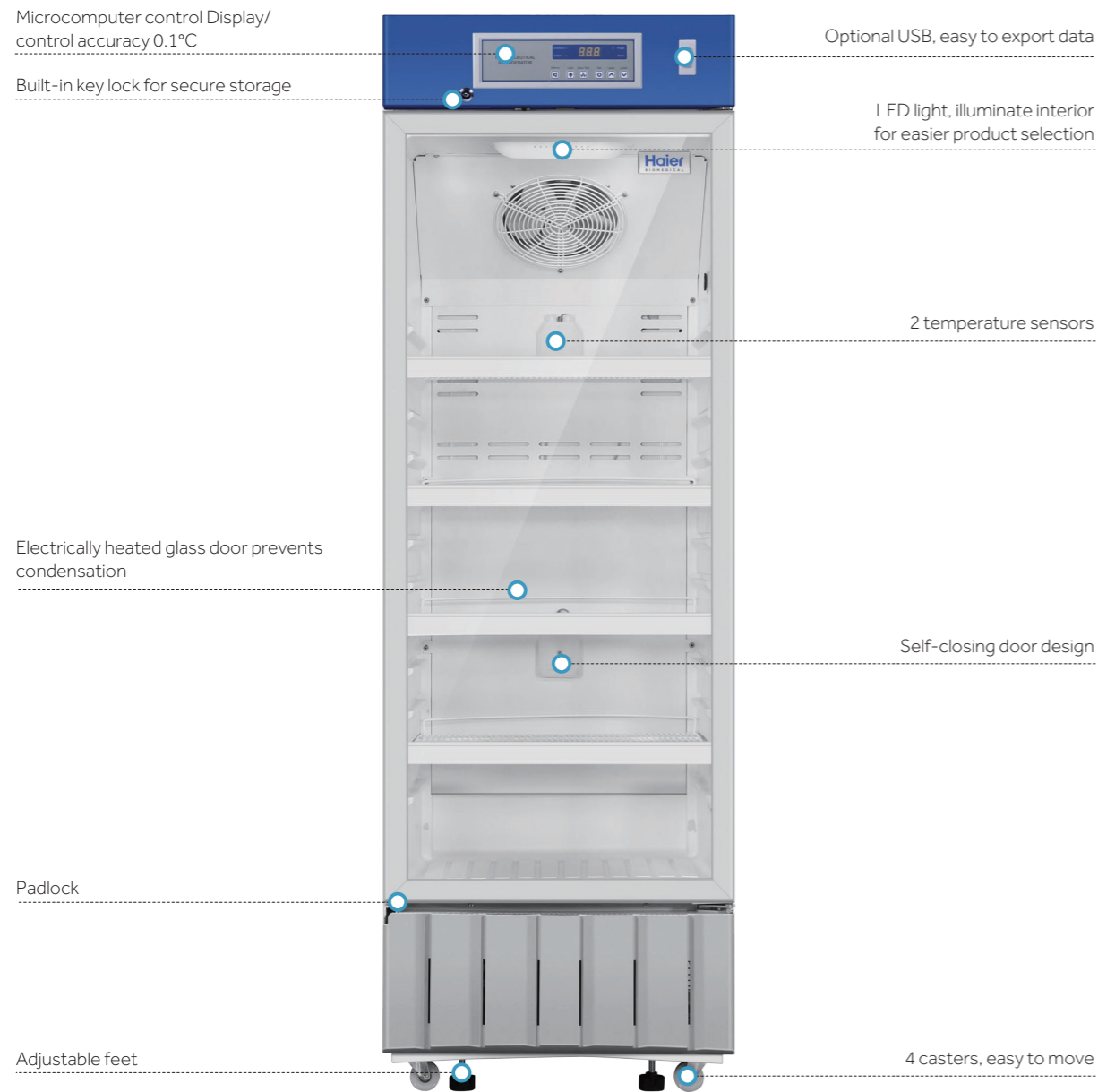
## Specifications



Model	HYC-509T	HYC-509TF	HYC-1099T	HYC-1099TF	HYC-509	HYC-509F	HYC-1099	HYC-1099F		
Technical Data	Cabinet Type	Upright, Single Glass Door	Upright, Single Solid Door	Upright, Double Glass Door	Upright, Double Solid Door	Upright, Single Glass Door	Upright, Single Solid Door	Upright, Double Glass Door	Upright, Double Solid Door	
	Climate Class	N	N	N	N	N	N	N	N	
	Cooling Type	Forced Air Cooling	Forced Air Cooling	Forced Air Cooling	Forced Air Cooling	Forced Air Cooling	Forced Air Cooling	Forced Air Cooling	Forced Air Cooling	
	Defrost Mode	Auto	Auto	Auto	Auto	Auto	Auto	Auto	Auto	
	Refrigerant	HC	HC	HC	HC	HC	HC	HC	HC	
	Sound Level (dB(A))	40	40	43	43	40	40	43	43	
Performance	Temperature Range (°C)	2-8	2-8	2-8	2-8	2-8	2-8	2-8	2-8	
Control	Controller	Microprocessor	Microprocessor	Microprocessor	Microprocessor	Microprocessor	Microprocessor	Microprocessor	Microprocessor	
	Display	Touchscreen+LED	Touchscreen+LED	Touchscreen	Touchscreen	LED	LED	LED	LED	
Electrical Data	Energy Consumption (kWh/day)	5.9	5.3	6.8	6	5.9	5.3	6.8	6	
	Power Supply (V/Hz)	220-240/50/60	220-240/50/60	220-240/50/60	220-240/50/60	220-240/50/60	220-240/50/60	220-240/50/60	220-240/50/60	
	Power (W)	370	315	470	440	370	315	470	440	
	Electrical Current (A)	1.85	1.75	2.5	2.25	1.85	1.75	2.5	2.25	
	Power Consumption (kWh/24h)	5.9	5.3	6.8	6	5.9	5.3	6.8	6	
Construction	Capacity (L/Cu.Ft)	509/17.97	509/17.97	1099/38.5	1099/38.5	509/17.97	509/17.97	1099/38.5	1099/38.5	
	Net/Gross Weight (approx)	kg	180/215	175/210	340/400	330/390	180/215	175/210	340/400	330/390
		lbs	396/473	385/462	748/1000	726/858	396/473	385/462	748/1000	726/858
	Interior Dimensions (W*D*H)	mm	593*585*1500	593*585*1500	1295*585*1500	1295*585*1500	593*585*1500	593*585*1500	1295*585*1500	1295*585*1500
		in	23.21*22.9*58.8	23.21*22.9*58.8	50.7*22.9*58.8	50.7*22.9*58.8	23.21*22.9*58.8	23.21*22.9*58.8	50.7*22.9*58.8	50.7*22.9*58.8
	Exterior Dimensions (W*D*H)	mm	693*813*1981	693*813*1981	1395*813*1981	1395*813*1981	693*813*1981	693*813*1981	1395*813*1981	1395*813*1981
		in	27.1*31.9*77.7	27.1*31.9*77.7	54.7*31.9*77.7	54.7*31.9*77.7	27.1*31.9*77.7	27.1*31.9*77.7	54.7*31.9*77.7	54.7*31.9*77.7
Packing Dimensions (W*D*H)	mm	800*875*2100	800*875*2100	1525*900*2100	1525*900*2100	800*875*2100	800*875*2100	1525*900*2100	1525*900*2100	
	in	31.3*34.3*82.3	31.3*34.3*82.3	59.8*35.3*82.3	59.8*35.3*82.3	31.3*34.3*82.3	31.3*34.3*82.3	59.8*35.3*82.3	59.8*35.3*82.3	
Alarms	High/Low Temperature	Y	Y	Y	Y	Y	Y	Y	Y	
	High Ambient Temperature	Y	Y	Y	Y	Y	Y	Y	Y	
	Door Ajar	Y	Y	Y	Y	Y	Y	Y	Y	
	Power Failure	Y	Y	Y	Y	Y	Y	Y	Y	
	Low Battery	Y	Y	Y	Y	Y	Y	Y	Y	
	Sensor Error	Y	Y	Y	Y	Y	Y	Y	Y	
	Communication Failure	Y	Y	Y	Y	Y	Y	Y	Y	
	Condenser Overheat	Y	Y	Y	Y	Y	Y	Y	Y	
Accessories	Caster	Y	Y	Y	Y	Y	Y	Y	Y	
	Foot	Y	Y	Y	Y	Y	Y	Y	Y	
	Porthole	Y	Y	Y	Y	Y	Y	Y	Y	
	Shelves/Drawers	Y/Optional	Y/Optional	Y/Optional	Y/Optional	Y/Optional	Y/Optional	Y/Optional	Y/Optional	
	USB Interface	Y	Y	Y	Y	Y	Y	Y	Y	
	Remote Alarm	Y	Y	Y	Y	Y	Y	Y	Y	
Others	CEUKCA DIN13277 (optional)	Y	Y	Y	Y	Y	Y	Y		

Product appearance and specifications are subject to change without notice

The product is used to store biological drugs and items at a temperature of 2-8°C. Typically used within pharmacy, pharma production, public health, hospitals and other life science laboratories.



**HYC-309**

## Standard Pharmacy Refrigerator



### Superior performance

- Microcomputer controller, display/control accuracy 0.1°C
- Temperature range 2-8°C, temperature uniformity  $\pm 2^\circ\text{C}$
- Energy-efficient conversion compressors and non-toxic, environmentally-friendly hydrocarbon refrigerant
- Self-closing door design
- Electrically heated glass door prevents condensation
- Multiple interface options - USB, RS485 and printer

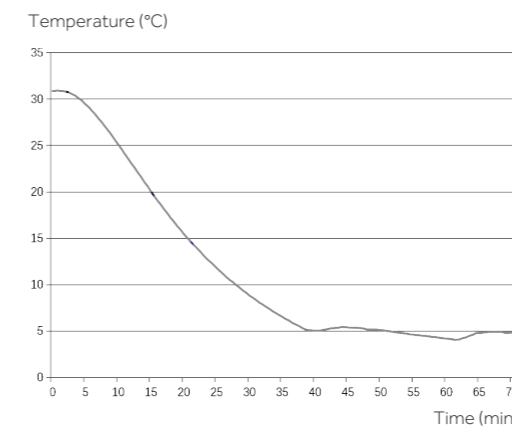


### Safe and reliable

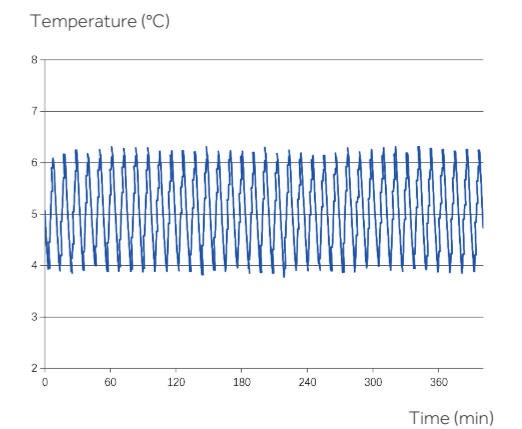
- Key lock and provision for padlock to ensure safe and secure product storage
- Multiple alarms: High/Low temperature alarm, high ambient temperature alarm, door ajar alarm, power failure, low battery, sensor error, comms error and remote alarm contacts
- Alarm mode: Audible/visual and remote alarm with battery back-up which continuously alarms for up to 48 hours in the event of a power failure

## Temperature Curve

**HYC-309**  
Cooling down (ambient 32°C)



**HYC-309**  
Stability (ambient 25°C)





New and improved Haier Biomedical pharmacy refrigerators now offer an improved temperature profile and more user-friendly control features.



**HYC-390**

## Standard Pharmacy Refrigerator



### Technical Advantages

- Accurate temperature control maintains 2°C to 8°C throughout the unit with an adjustable increment at 0.1°C
- Improved user interface includes a data storage capacity of up to 10 years
- Oversized air-cooled condenser improves the robustness of the refrigeration system, reliability and refrigeration efficiency



### Ergonomic Design

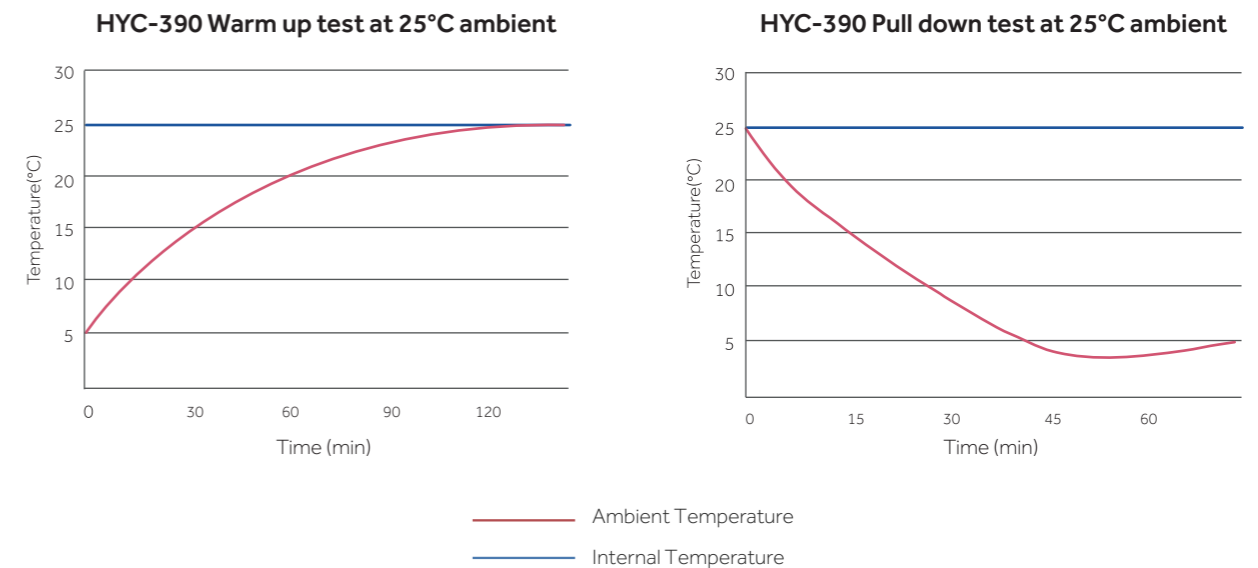
- The temperature data of the newly improved storage management system is downloadable from the USB port
- Traceability of temperature data
- Heated double-pane glass door allows a clear view of stored products without condensation at 32°C and 85% relative humidity ambient conditions
- LED interior light saves energy and provides bright lighting of interior for easy product location and identification
- Shelves with label holders meet demands required for quick and effective product archiving and retrieving



### Safety

- Microprocessor control with digital display
- Temperature uniformity within 3°C
- Malfunction alarms include high/low temperature, door ajar, sensor error, power failure, low battery and remote alarm interface

## Temperature Curve



Used for storage of biological products, vaccines, drugs, reagents, etc., the unit is widely used in pharmacies, pharmaceutical factories, hospitals, CDC, laboratories as key examples.



HYC-410



### Superior Performance

- Microcomputer controller, LED temperature display, accuracy 0.1°C
- Fin type evaporator and double fan system, temperature uniformity  $\pm 2^{\circ}\text{C}$
- R600a hydrocarbon refrigerant, LBA foaming agent, energy saving and environmental protection
- Optimized system and structure design, noise down to 41 dB(A)
- Panoramic glass door, LED lighting, goods are clear at a glance
- Heated door to prevent condensation
- Standard with 1 test hole, convenient for user to test interior temperature



### Safe

- Equipped with built-in lock and security latch to accommodate a padlock, ensuring safe and reliable storage
- Multiple alarms: High and low temperature, sensor error, power failure, low battery, door ajar, high ambient temperature and communication fault alarm
- Alarm mode: audible buzzer and flashing light, remote alarm. The alarm will continue for 24 hours after power failure

## Standard Pharmacy Refrigerator

### Product Details

#### Material:

HIPS adsorption liner,  
sprayed steel case

#### Caster and foot:

Standard equipped with 4 universal casters and 2 adjustable feet, the refrigerator is easy to move and stabilize



HYC-410

#### Shelves:

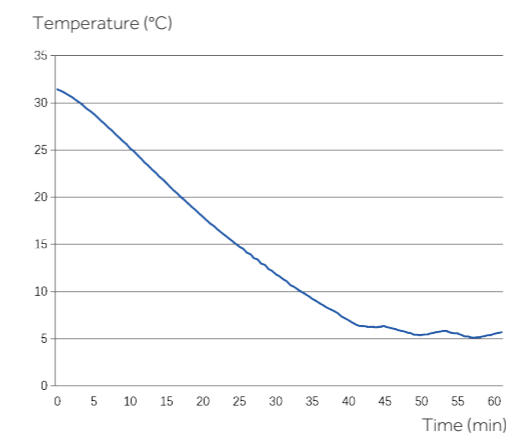
Standard with 6 shelves



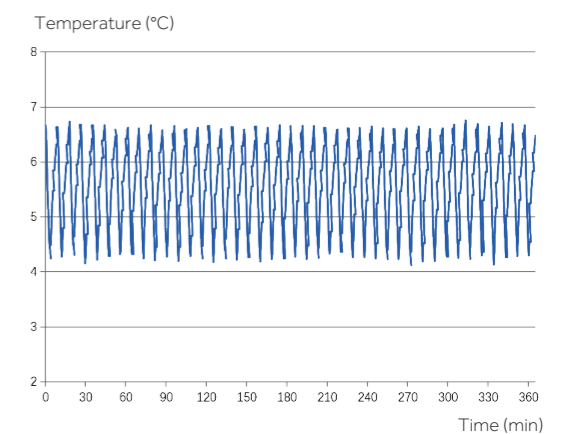
\*Optional: USB, printer, RS485/232 interface

### Product Performance

HYC-410  
Cooling down (ambient 32°C)



HYC-410  
Stability (ambient 25°C)





The product is applicable to pharmacies, pharmaceutical factories, quarantine stations, health centers and hospitals, used to store biological products and those need to be stored at a temperature between 2-8°C.



220V/50HZ

115V/60HZ

HYC-639

**Energy saving**

70mm thick foam layer, optimized refrigeration system, low power consumption, less than 6 kWh per day

**Environmentally-friendly**

Hydrocarbon refrigerant, truly completely environmental protection refrigeration system. Polyurethane insulation layer, the whole series adopts European ROHS directive materials, for environmental protection

**Better uniformity**

Finned evaporator, double fan system.

The temperature is more uniform, the characteristic point temperature uniformity is  $\pm 2^{\circ}\text{C}$

**Low noise**

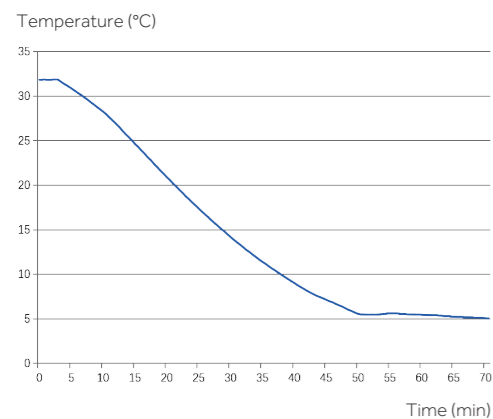
Optimized system and structure noise reduction design

**Multi-channel sensor, reliable and safe**

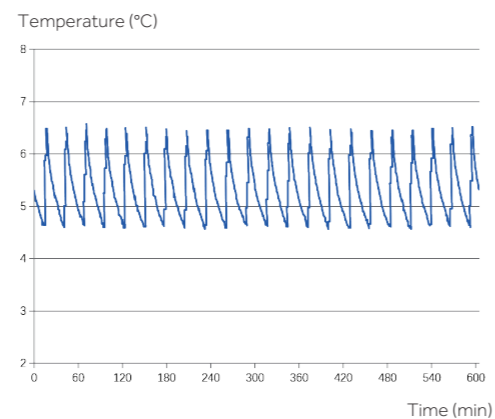
Equipped with upper display sensor, lower display sensor, defrosting sensor, control sensor, ambient temperature sensor, condenser dirty sensor

**Typical Performance Characteristics in 32°C Ambient Temp**

HYC-639  
Cooling down (ambient 32°C)



HYC-639  
Stability (ambient 25°C)

**Standard Pharmacy Refrigerator****Microprocessor control system:**

Microcomputer electronic temperature controller, LED temperature display, the display accuracy is 0.1°C

Multiple alarm functions, such as high temperature alarm, low temperature alarm, sensor error alarm, power failure alarm, low battery alarm, door ajar, condenser dirty alarm, high ambient temperature alarm as key examples.

Audio and visual alarm. The equipment can be connected to the remote alarm interface

**Insulation**

70mm-thick foam insulation layer to provide better insulation

**Porthole**

Standard equipped with a porthole to facilitate the user to test interior temperature

**Security lock**

Equipped with safety lock, safe storage of drugs

**Temperature recorder**

Standard equipped with USB port, the printer and RS485 interface are optional

**Material**

The inner liner is equipped with spraying steel plate for easy cleaning

**Casters and levelling leg design**

Standard equipped with 4 universal casters and 2 adjustable feet to move and stabilize the equipment

**Shelves**

Standard equipped with 4 shelves

The Haier Biomedical pharmacy refrigerators are suitable for pharmacies, drug stores, pharmaceutical companies, hospitals, clinics and other pharmaceutical storage areas such as storage and logistics.



**HYC-1378**

## Standard Pharmacy Refrigerator

### Durable and Reliable - Key Features

- Energy efficient hydrocarbon (HC) refrigeration system
- Permanently lubricated cooling fan for safety and longevity
- Forced-air cooling with optimized air distribution system designed to achieve maximum temperature uniformity and stability
- Optimized refrigeration system design for more effective cooling and speedy recovery
- Temperature uniformity within  $\pm 2^{\circ}\text{C}$
- Chamber temperature range  $2\text{-}8^{\circ}\text{C}$
- Microprocessor control with large digital display. Adjustable temperature with an increment of  $0.1^{\circ}\text{C}$
- Wide voltage tolerance suitable for regions with an unstable voltage supply
- Designed for ambient temperature  $10^{\circ}\text{C}\text{-}32^{\circ}\text{C}$  with humidity below 85%

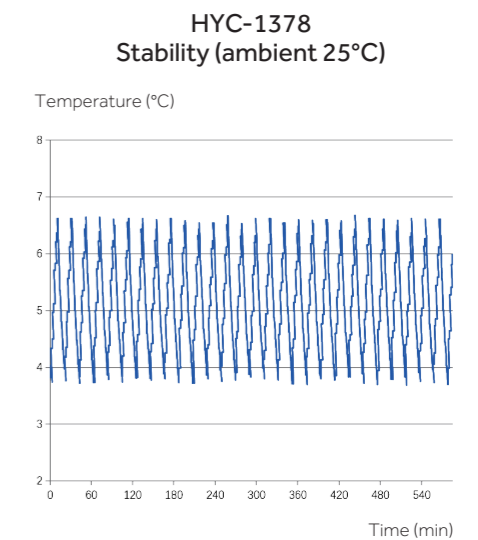
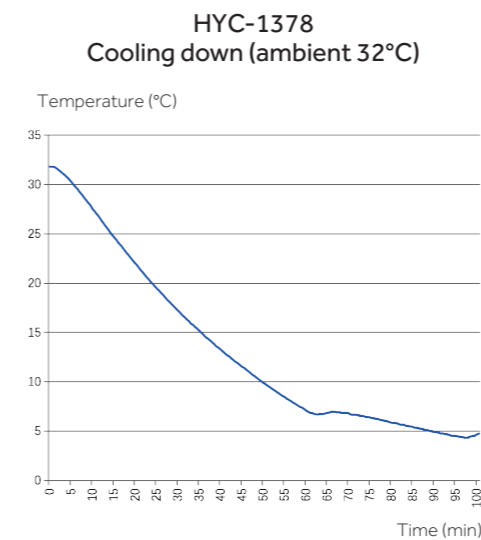
### Safety

- Equipped with a complete temperature alarm system featuring audible buzzer and visible flashing light
- Capable of alerting failures due to high or low temperature, sensor error, door ajar, remote alarm, power failure and low battery

### Ergonomic Design

- Optimized space utilization design with multi-level and adjustable shelf height to accommodate the different storage requirements of varied sized pharmaceutical products.
- Safety lock to prevent unauthorized access
- Caster design and levelling feet
- Interior light

### Product Performance





### Easy to Install, Ergonomic and Reliable

Haier Biomedical are pioneers in under-counter pharmacy refrigerator design and manufacturing, offering ultra-low noise system, safety lock, complete alarm system for sample safety and protection.



### Under-Counter Pharmacy Refrigerator



HYC-118

HYC-118A



#### Reliability and Key Features

- Energy efficient hydrocarbon (HC) refrigeration system
- Permanently lubricated cooling fan for safety and longevity
- Forced-air cooling with optimized air distribution system designed to achieve maximum temperature uniformity and stability
- Optimized refrigeration system design for more effective cooling and speedy recovery
- Temperature uniformity within  $\pm 3^{\circ}\text{C}$
- Chamber temperature range  $2\text{--}8^{\circ}\text{C}$
- Microprocessor control, digital display and temperature adjustment with an increment of  $0.1^{\circ}\text{C}$
- Designed for ambient temperature  $10\text{--}32^{\circ}\text{C}$  with humidity below 70%



#### Safety

- Equipped with a complete temperature alarm system featuring audible buzzer and visual flashing light
- Capable of alerting failures due to high and low temperature, sensor error, door ajar, power failure, and remote alarm interface

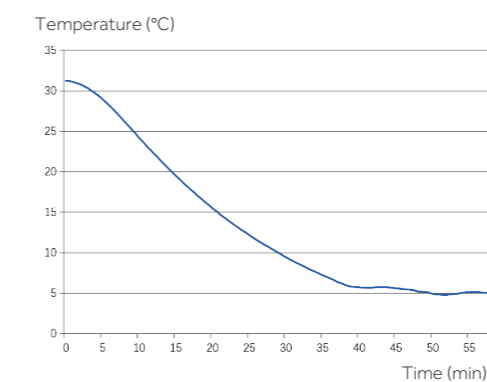


#### Ergonomic Design

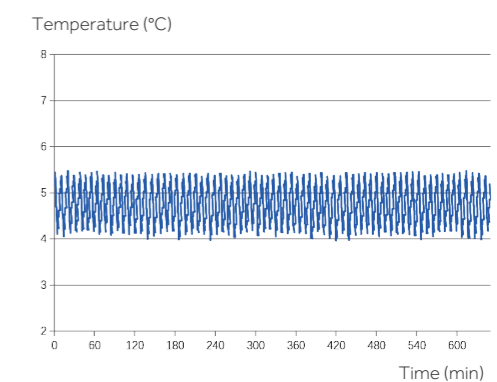
- Interior LED light
- Safety lock to prevent unauthorized access

#### Product Performance

HYC-118A  
Cooling down (ambient  $32^{\circ}\text{C}$ )



HYC-118A  
Stability (ambient  $25^{\circ}\text{C}$ )



Specifications



Model	HYC-390F		HYC-610		HYC-639		HYC-940		HYC-940C	HYC-940F	HYC-1031GD	HYC-1378		
Technical Data	Cabinet Type	Upright, Single Door		Upright, Single Door		Upright, Single Door		Upright, Double Glass Door		Upright, Double Glass Door	Upright, Double Solid Door	Upright		
	Climate Class	N		N		ST		N		N	N	N		
	Cooling Type	Forced Air Cooling		Forced Air Cooling		Forced Air Cooling		Forced Air Cooling		Forced Air Cooling	Forced Air Cooling	Forced Air Circulation		
	Defrost Mode	Auto		Auto		Auto		Auto		Auto	Auto	Auto Defrost		
	Refrigerant	HC		HC		HC		HC		HC	HC	R290, 80g		
	Sound Level (dB(A))	43	43	43	45	43	46	43	45	45	43	39	43	45
Performance	Temperature Range (°C)	2-8		2-8		2-8		2-8		2-8	2-8	2-8		
	Controller	Microprocessor		Microprocessor		Microprocessor		Microprocessor		Microprocessor	Microprocessor	Microprocessor		
Control	Display	LED		LED		LED		LED		LED	LED	LED		
	Power Supply (V/Hz)	220-240/50/60	115/60	220-240/50/60	115/60	220-240/50	115/60	220-240/50/60	115/60	115/60	220-240/50/60	220-240/50/60	220-240/50/60	115/60
Electrical Data	Electrical Current (A)	1	1.5	3	6.2	2.15	2.5	3.5	7.5	11.5	2.7	2.2	3	7.5
	Capacity (L/Cu.Ft)	390/13.8		610/21.6		639/22.6	600/21.2	890/31.4		890/31.4	890/31.4	1031	1378/48.7	
Dimensions	Net/Gross Weight (approx)	kg	106/129	204/227		200/240		227/279		207/259	207/259	255/265	310/360	
		lbs	233.8/284.5	449.7/500.4		551.15/639.33		500.4/615.1		456.4/571.1	456.4/571.1	/	683.4/793.7	
	Interior Dimensions (W*D*H)	mm	530*555*1380	680*640*1400		620*706*1520		1030*590*1425		1030*590*1425	1030*590*1425	1115*590*1670	1320*700*1500	
		in	20.9*21.9*54.3	26.8*25.2*55.1		24.4*27.8*59.8		40.6*23.2*56.1		40.6*23.2*56.1	40.6*23.2*56.1	/	52.0*27.6*59.1	
	Exterior Dimensions (W*D*H)	mm	665*710*1965	780*840*1945		760*897*1993		1130*755*1980		1130*755*1980	1130*755*1980	1205*730*1990	1440*950*1980	
		in	26.2*28.0*77.4	30.7*33.1*76.6		29.9*35.3*78.5		44.5*29.7*78.0		44.5*29.7*78.0	44.5*29.7*78.0	/	56.7*37.4*78.0	
Packing Dimensions (W*D*H)	mm	690*790*2110	865*945*2090		873*997*2143		1250*850*2130		1250*850*2130	1250*850*2130	1260*905*2110	1570*1010*2120		
	in	27.1*31.0*82.9	34.1*37.2*82.3		34.5*39.3*84.4		49.2*33.5*83.9		49.2*33.5*83.9	49.2*33.5*83.9	/	61.8*39.8*83.5		
Alarms	Container Load (20/40/40H)	22/44/44		12/26/26		12/26/26		11/23/23		11/23/23	11/23/23	10/22/22	7/14/14	
	High/Low Temperature	Y		Y		Y		Y		Y	Y	Y	Y	
	Remote Alarm	Y		Y		Y		Y		Y	Y	Y	Y	
	Power Failure	Y		Y		Y		Y		Y	Y	Y	Y	
	Sensor Error	Y		Y		Y		Y		Y	Y	Y	Y	
	Low Battery	Y		Y		Y		Y		Y	Y	Y	Y	
	Door Ajar	Y		Y		Y		Y		Y	Y	Y	Y	
Accessories	Caster	Y		Y		Y/4		Y		Y	Y	4	Y	
	Foot	Y		Y		Y/2		Y		Y	Y	2	Y	
	Porthole	Y		Y		Y		Y		Y	Y	2	Y	
	Shelves/Drawers	7/-		6/-		4/-		12/-		12/-	12/-	12/-	12/-	
	USB Interface	Optional	Y	Optional		Y		Optional		Optional	Optional	Optional	Y	
	Printer	Optional		N/A		Optional		Optional		Optional	Optional	Optional	Optional	
	Temperature Recorder	/		Optional		/		Optional		Optional	Optional	/	Optional	
Others	Certification	CE, ENERGY STAR		CE	UL	CE	UL, ENERGY STAR, ANSI 456	CE	UL	UL	CE	CE, DIN13277 (Optional)	CE	UL

Product appearance and specifications are subject to change without notice



Specifications



Model	HYC-68		HYC-68A		HYC-85GD	HYC-118		HYC-118A		HYC-290		HYC-309	HYC-390		HYC-410
Cabinet Type	Upright, Solid Door		Upright, Glass Door		Table-top/Under-counter	Upright, Solid Door		Upright, Glass Door		Upright, Single Door		Upright	Upright, Single Door		Upright, Single Door
Climate Class	N		N		N, 16-32°C	N		N		N		N	N		N
Cooling Type	Forced Air Cooling		Forced Air Cooling		Forced Air Circulation	Forced Air Cooling		Forced Air Cooling		Forced Air Cooling		Forced Air Cooling	Forced Air Cooling		Forced Air Cooling
Defrost Mode	Auto		Auto		Auto Defrost	Auto		Auto		Auto		Auto	Auto		Auto
Refrigerant	HC		HC	HC	R600a	HC	HC	HC	HC	HC		HC	HC		HC
Sound Level (dB(A))	41		41		35	41		41		43	43	41	43	43	41
Performance	Temperature Range (°C)		2-8		2-8	2-8		2-8		2-8		2-8	2-8		2-8
Control	Controller		Microprocessor		Microprocessor	Microprocessor		Microprocessor		Microprocessor		Microprocessor	Microprocessor		Microprocessor
	Display		LED		Digital	LED		LED		LED		LED	LED		LED
Electrical Data	Power Supply (V/Hz)		220-240/50	115/60	220-240/50	220-240/50/60	115/60	220-240/50/60	115/60	115/60	220-240/50/60	220-240/50/60	115/60	220-240/50/60	220-240/50
	Electrical Current (A)		0.85	1.7	0.85	1.4	1.4	1.5	1.5	2.2	1.8	1.5	2.4	1.8	2.0
Dimensions	Capacity (L/Cu.Ft)		68/2.4		85	118/4.2		118/4.2		290/10.2		309/10.91	390/13.8		410
	Net/Gross Weight (approx)	kg	38/40		36/41	41/46		46/51		105/127		77/87	116/139		116/139
		lbs	83.8/88.2		83.8/88.2	/	90.5/101.5		101.5/112.5		231.6/280.1		169.76/191.80	255.8/306.6	
	Interior Dimensions (W*D*H)	mm	415*385*505		405*405*555	515*415*630		515*415*630		530*555*1080		525*500*1290	530*555*1380		530*590*1380
		in	16.3*15.2*19.9		/	20.3*16.3*24.8		20.3*16.3*24.8		20.9*21.9*42.5		20.67*19.69*50.79	20.9*21.9*54.3		20.9*22.8*54.3
	Exterior Dimensions (W*D*H)	mm	495*580*660		495*550*740	597*635*810		597*635*810		665*710*1665		600*630*1840	665*710*1965		665*710*1965
		in	19.5*22.8*26.0		/	23.5*25.0*31.9		23.5*25.0*31.9		26.2*28.0*65.6		23.62*24.80*72.44	26.2*28.0*77.4		26.2*28.0*77.4
Packing Dimensions (W*D*H)	mm	540*640*710		570*630*810	680*690*910		680*690*910		690*790*1810		660*670*2060	690*790*2110		675*790*2115	
	in	21.3*25.2*28.0		/	26.8*27.2*35.8		26.8*27.2*35.8		27.1*31.0*71.1		25.98*26.38*81.10	27.1*31.0*82.9		26.6*31.1*83.3	
	Container load (20"/40"/40"H)		102/204/204		74/152/228	48/96/96		48/96/96		22/44/44		24/48/48	22/44/44		23/48/48
Alarms	High/Low Temperature		Y		Y	Y		Y		Y		Y	Y		Y
	Remote Alarm		Y		Y	Y		Y		Y		Y	Y		Y
	Power Failure		Y		Y	Y		Y		Y		Y	Y		Y
	Sensor Error		Y		Y	Y		Y		Y		Y	Y		Y
	Low Battery		Y		Y	Y		Y		Y		Y	Y		Y
	Door Ajar		Y		Y	Y		Y		Y		Y	Y		Y
	Caster		N		/	Y/2		Y/2		Y		4	Y		4
Accessories	Foot		Y/2		2	Y/2		Y/2		Y		2	Y		2
	Porthole		Y		1	Y		Y		Y		1	Y		Y
	Shelves/Drawers		2/1		2/1	3/1		3/1		5/-		5/-	7/-		6
	USB Interface		Optional		Optional	/		/		Y		Optional	Y		Optional
	Printer		N/A		N/A	N/A		N/A		Optional		Optional	Optional		Optional
	Temperature Recorder		N/A		/	N/A		N/A		/		/	/		N/A
	Certification		CE	UL	CE	UL	CE, DIN13277 (Optional)	CE	UL	CE	UL	UL	CE	CE	UL

Product appearance and specifications are subject to change without notice

## Scope of Application

This product is designed to store frozen plasma, biomaterials, vaccines, electronic devices and low temperature tests of special materials, in blood stations, hospitals, epidemic prevention stations, universities, scientific research institutes, electronic chemical industry and other enterprise laboratories.



HYCD-282

HYCD-282A



### Multipurpose and Space Efficient

- One cabinet with two independent chambers, both are self-contained and independently controlled with individual doors
- Refrigerator chamber is equipped with a double-paned glass viewing window and LED interior lighting



### Environment Friendly

Hydrocarbon refrigerant (R600a for refrigerator/R290 for freezer) and CFC-free polyurethane insulation for reduced global warming



### Stainless Steel Interior

The interior of refrigerator and freezer are both made of stainless steel, which is easy to clean and corrosion-proof



### Microprocessor Controller with Digital Display

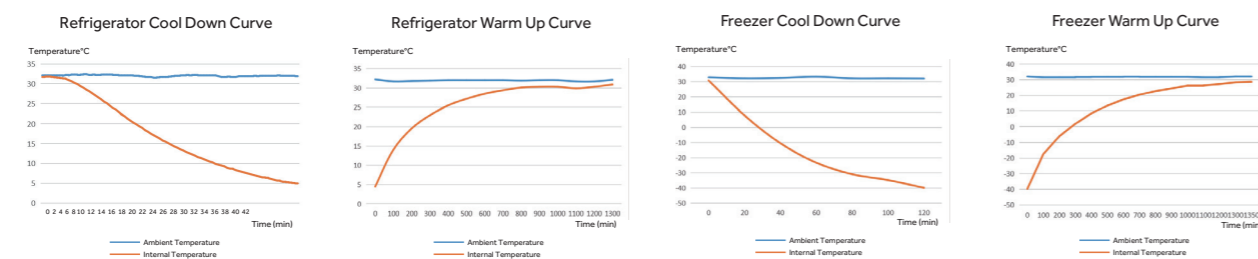
- Refrigerator temperature 2~8°C with resolution of 0.1°C
- Freezer temperature -40~-10°C with resolution of 1°C
- Multiple alarm functions with remote alarm contact to ensure safe monitoring



### High Performance

- Refrigerator: Forced-air cooling system with cycle defrost, temperature uniformity±3°C
- Freezer: Cold wall cooling system, manual defrost, temperature uniformity±5°C
- Standard USB port & optional printer, easy to get temperature record

## Product Performance



## Combined Refrigerator and Freezer

### Specifications

	Model	HYCD-282		HYCD-282A	
		Refrigerator	Freezer	Refrigerator	Freezer
Technical Data	Cabinet Type	Upright		Upright	
	Climate Class	N		N	
	Cooling Type	Forced air cooling	Direct cooling	Forced air cooling	Direct cooling
	Defrost Mode	Auto	Manual	Auto	Manual
	Refrigerant	R600a	R290	R600a	R290
	Sound Level (dB(A))	43		43	
Performance	Temperature Range (°C)	2-8	-10~-40	2-8	-10~-40
Control	Controller	Microprocessor		Microprocessor	
	Display	LED		LED	
Electrical Data	Power Supply (V/Hz)	220-240/50/60		220-240/50/60	
	Power (W)	410		410	
	Electrical Current (A)	2.5		2.5	
Dimensions	Capacity (L/Cu.Ft)	185/6.5	97/3.4	185/6.5	97/3.4
	Net/Gross Weight (approx) kg	145/160		145/160	
	Interior Dimensions (W*D*H) mm	605*510*720	515*465*440	605*510*720	515*465*440
	Exterior Dimensions (W*D*H) mm	735*660*1810		735*660*1810	
	Packing Dimensions (W*D*H) mm	775*720*1930		775*720*1930	
	Container Load (20'/40'/40'H)	21/43/43		21/43/43	
Alarms	High/Low Temperature	Y		Y	
	Door Ajar	Y		Y	
	Remote Alarm	Y		Y	
	Power Failure	Y		Y	
	Sensor Error	Y		Y	
	Low Battery	Y		Y	
	High Ambient Temp	Y		Y	
Accessories	Caster	Y/4		Y/4	
	Foot	Y/2		Y/2	
	Porthole	Y/2		Y/2	
	Shelves/Drawers	3/1	1/2 (without sliding rack)	3/1	1/2 (without sliding rack)
	Stylus Printer	Optional		Optional	
	USB Interface	Y		Y	
Others	Certification	CE		CE	
Compressor Type	Frequency Conversion Compressor		Frequency Conversion Compressor		
Compressor Quantity	2		2		

Product appearance and specifications are subject to change without notice



## Main Application

This product is designed to store blood plasma, biological products, vaccines, medicines and chemical reagents.



HYCD-469



Temperature Control



Security Guaranteed



Variable Frequency Hydrocarbon Refrigeration System



Data Storage

## Key Features



### Temperature Control

- Refrigerator temperature ranges from 2°C to 8°C
- Freezer temperature ranges adjustable from -10°C to -40 °C
- Microprocessor temperature control accuracy 0.1°C (refrigerator) and 1°C (freezer)



### Safety

- Separate doors for refrigerator and freezer with independent lock catches, dual padlocks available to ensure product safety
- Multiple alarm functions including high or low temperature, sensor error, high ambient temp, power failure and remote alarm
- Two types of alarm indicators: audible buzzer and visible flashing light



### Refrigerator System

- Refrigerator and freezer have independently controlled variable frequency refrigeration systems, standalone displays as well as separate on and off controls
- Robust compressor system operating with environmentally friendly hydrocarbon refrigerant
- Refrigerator with high quality and high efficiency cooling fan provides better temperature uniformity and stability

## Combined Refrigerator and Freezer



### Ergonomic Design

- Large LED screen display for excellent user interface experience
- USB port automatically saves temperature data for up to 10 years for convenient inquiry and record keeping
- Optional printer to simultaneously print out temperatures of the refrigerator and the freezer
- Four casters and two levelling legs design for ease of maneuvering

## Specifications

Model	HYCD-319A (115V)		HYCD-469		HYCD-469A		HYCD-469A (115V)			
	Refrigerator	Freezer	Refrigerator	Freezer	Refrigerator	Freezer	Refrigerator	Freezer		
Technical Data	Cabinet Type	Upright		Upright		Upright		Upright		
	Climate Class	N		N (16-32°C)		N (16-32°C)		N (16-32°C)		
	Cooling Type	Forced air cooling	Direct cooling	Forced air cooling	Direct cooling	Forced air cooling	Direct cooling	Forced air cooling	Direct cooling	
	Defrost Mode	Auto	Manual	Auto	Manual	Auto	Manual	Auto	Manual	
	Refrigerant	R600a 45g	R290 60g	R600a	R290	R600a	R290	R600a	R290	
	Sound Level (dB(A))	50		45		45		52		
Performance	Temperature Range (°C)	2-8	-15--40	2-8	-10--40	2-8	-10--40	2-8	-15--40	
Control	Controller	Microprocessor		Microprocessor		Microprocessor		Microprocessor		
	Display	LED		LED		LED		LED		
Electrical Data	Power Supply (V/Hz)	115/60		220-240/50/60		220-240/50/60		115/60		
	Power (W)	450		640		640		640		
	Electrical Current (A)	6		3		3		7		
Dimensions	Capacity (L/Cu.Ft)	200/7.06	100/3.53	269/9.5	200/7.1	269/9.5	200/7.1	245/8.65	200/7.1	
	Net/Gross Weight (approx)	kg	145/160		176/207		176/207		176/207	
		lbs	319.7/352.7		388.0/456.4		388.0/456.4		388.0/456.4	
	Interior Dimensions (W*D*H)	mm	605*510*720	515*465*440	593*585*800	553*545*660	593*585*800	553*545*660	593*585*800	553*545*660
		in	23.8*20*28.3	20.2*18.3*17.3	23.3*23.0*31.5	21.8*21.5*26.0	23.3*23.0*31.5	21.8*21.5*26.0	23.3*23.0*31.5	21.8*21.5*26.0
	Exterior Dimensions (W*D*H)	mm	735*660*1810		738*834*1975		738*834*1975		738*834*1975	
		in	28.9*26.0*71.3		29.1*32.8*77.8		29.1*32.8*77.8		29.1*32.8*77.8	
	Packing Dimensions (W*D*H)	mm	775*720*1930		800*875*2100		800*875*2100		800*875*2100	
in		30.5*28.3*76		31.5*34.4*82.7		31.5*34.4*82.7		31.5*34.4*82.7		
Container Load (20'/40'/40'H)		21/43/43		14/28/28		14/28/28		14/28/28		
Alarms	High/Low Temperature	Y		Y		Y		Y		
	Sensor Error	Y		Y		Y		Y		
	Power Failure	Y		Y		Y		Y		
	Door Ajar	Y		Y		Y		Y		
	Remote Alarm	Y		Y		Y		Y		
	High Ambient Temperature	Y		Y		Y		Y		
	Low Battery	Y		Y		Y		Y		
Accessories	Caster	Y/4		Y		Y		Y		
	Foot	Y/2		Y		Y		Y		
	Porthole	Y/2		Y		Y		Y		
	Shelves/Drawers	3/1	1 (For supporting the upper drawer)/2 (without sliding rack)	3/0	3/0 (Max 3 Drawers optional, without sliding rack)	3/0	3/0 (Max 3 Drawers optional, without sliding rack)	3/0	3/0 (Max 3 Drawers optional, without sliding rack)	
Others	USB Interface	Y		Y		Y		Y		
Certification	UL, NSF/ANSI 456		CE		CE		UL			

Product appearance and specifications are subject to change without notice